

resinDEK[®]
the panel of expertsSM

Save Tens of Thousands of Dollars &
Time with ResinDek[®] Flooring Panels

The Multi-Level Flooring Solution



 **CORNERSTONE**
SPECIALTY WOOD PRODUCTS, LLC[®]



ResinDek® flooring panels, manufactured by Cornerstone Specialty Wood Products, LLC® provide a tremendous value for elevated floors in storage facilities that require durability, a showcase appearance, and ease of maintenance. ResinDek flooring panels have proven structural integrity and provide the strength you associate with a concrete floor, yet can offer savings of tens of thousands of dollars. Whether you have new construction or retrofitting an existing structure, ResinDek panels offer a compelling value as well as a 10 year warranty.



It is quite common to **save up to \$5/sqft* or more** when using ResinDek instead of concrete. How can you realize those savings? Simple. . . **Less Weight + Less Footings + Less Steel + Less Time = Real Savings**

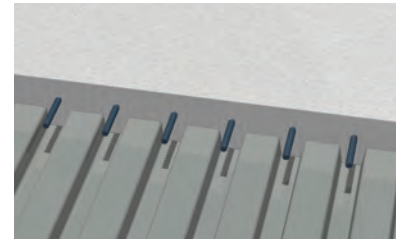
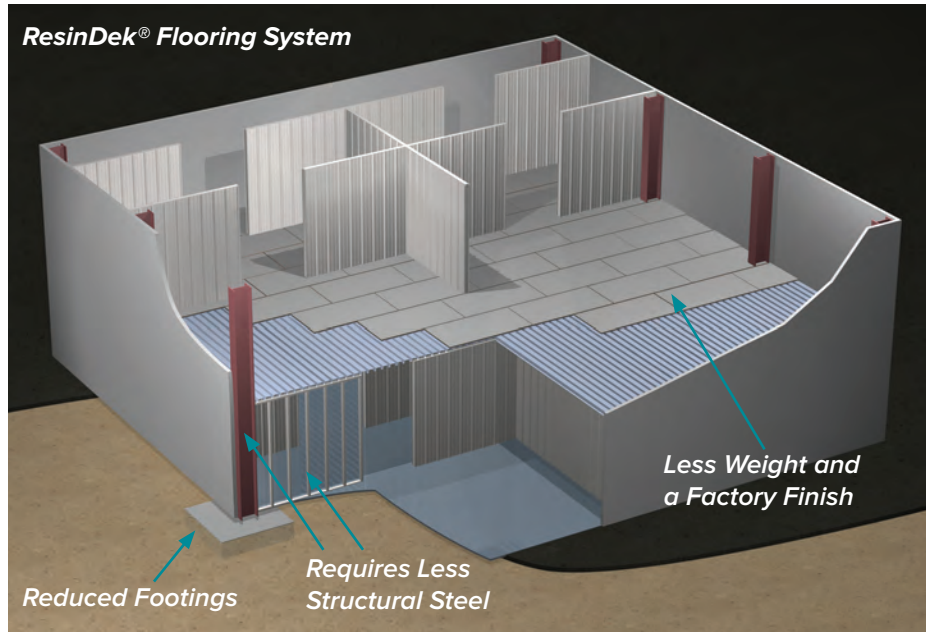
- ResinDek is 90% lighter than concrete which allows for less steel to be used in the support structure.
- With ResinDek concrete footings may be significantly reduced or eliminated altogether.
- Platforms using ResinDek can be designed with an allowable deflection limit of L/240, whereas concrete's allowable deflection is limited to L/360: this reduces the amount of steel required in the support structure.
- Construction time can be reduced by as much as 3 - 5 weeks depending upon the size of the job.
- Concrete needs time to cure, ResinDek is supplied with a factory finish, so once ResinDek is installed it's done.
- The material cost per square foot for ResinDek is less than that of concrete.

** Actual savings may vary based on project scope and location.*



www.resindek.com | 888.755.3048 | 513.772.5560

ResinDek's® Value Engineering Solution = Real Savings



Concrete with Corrugated Steel Deck weighs 45 psf



ResinDek® with Corrugated Steel Deck weighs 5 psf

Here's a couple more reasons why ResinDek is better than concrete:

- ResinDek is easy to clean and maintain.
- ResinDek can contribute towards LEED® credits.

3.

www.resindek.com | 888.755.3048 | 513.772.5560



High Performance ResinDek® Flooring Panels

ResinDek® LD, SD, MD, HD and MAX

ResinDek flooring panels are custom manufactured with engineering processes which enhance the functionality, durability and life of the floor. Premium materials and unsurpassed manufacturing methods ensure that every ResinDek panel will withstand heavy equipment, rolling carts, and pallet jack loads. Backed by a 10-year product warranty, ResinDek panels have proven structural integrity to support live and dead pallet jack loads from 2,000 – 8,000 lbs. and easily support 125 psf uniform loads. ResinDek panels are custom manufactured and available in sizes up to 4' x 10'.

Beautiful, Long-Lasting Textured Finish

Gray Diamond Seal® 2 is the standard by which all other coatings in our industry are measured. This superior finish is designed and engineered for long-lasting durability, clean-ability, slip resistance and will look beautiful year after year. Gray Diamond Seal 2 comes standard with anti-static protection, electrostatic dissipative (ESD) protection is optional. Gray Diamond Seal 2 has been tested in accordance with the following standards:

- Stain Resistance: NEMA LD 3.4
- Taber Abrasion: ASTM D4060
- Slip Resistance: ASTM D2047



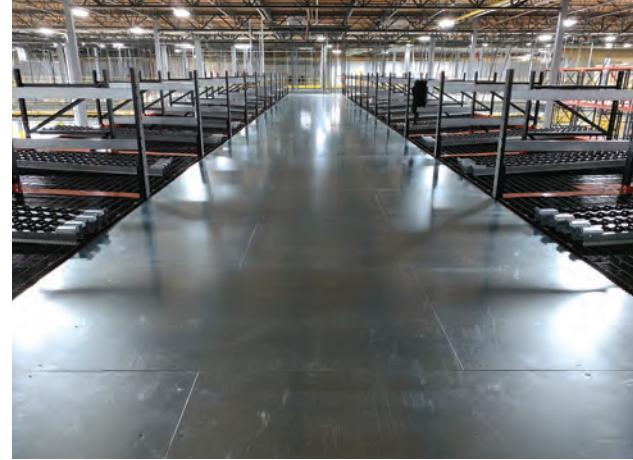
Iron Clad Protection for Heavy Wear Areas

ResinDek® with MetaGard® (Patent Pending)

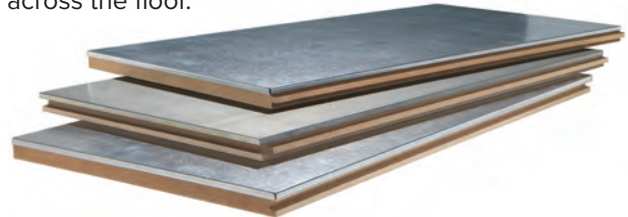
ResinDek with MetaGard is the perfect solution for heavy wear areas in Self-Storage facilities. ResinDek flooring panels with the MetaGard surface combines the structural integrity of the ResinDek panel along with the strength and durability of a steel wearing surface. The MetaGard steel surface is fused to the ResinDek panel with a proprietary bonding agent and features an edge that encapsulates the perimeter of the panel. This creates a floor that will not delaminate, has superior physical properties, is level for rolling loads, and has no sharp edges that could cut or snag objects passing over it.

ResinDek with MetaGard has been tested per ASTM D2047 standards and has been found to meet or exceed OSHA specification for slip resistance. Plus, the MetaGard finish has electrostatic dissipative properties which protect sensitive electronic equipment from damage.

The MetaGard surface offers a beautiful aesthetic appeal and is available in galvanized or stainless steel. Other steel variations may be available to fit your particular application. ResinDek panels with the MetaGard surface are available in sizes up to 4' x 8'.



MetaGard's tough steel surface will help minimize surface wear caused by dragging or pushing objects across the floor.



ResinDek® Mezzanine Floor Panels



Product Name	Pallet Jack Load Limits **	Thickness	UF	Finishes Available			
				GDS2	ESD	TriGard®	MetaGard®
ResinDek® LD	up to 2,000 lbs.	3/4"	■	■	■	■	■
ResinDek® SD	up to 2,500 lbs.	3/4"	■	■	■	■	■
ResinDek® MD	up to 3,500 lbs.	3/4"	n/a	■	■	■	■
ResinDek® HD	up to 4,500 lbs.	3/4"	n/a	■	■	■	■
ResinDek® MAX	up to 8,000 lbs.	1-1/2"	n/a	■	■	■	■
* ResinDek® Xspan®	up to 3,000 lbs.	1-1/8"	n/a	■	■	■	■
* ResinDek® Xspan® FR	up to 3,800 lbs.	1-1/8"	n/a	■	■	■	■

Finishes Available

Unfinished
 Gray Diamond Seal 2™
 ESD Certified Static Control
 TriGard®
 MetaGard®

Options

Invisi-Loc® fasteners
 T & G Configurations

All ResinDek Products can contribute towards earning points for LEED® qualified buildings.

* No Corrugated Required
 ** Includes Weight of Pallet Jack



L.O.E - Limited Outdoor Exposure

ResinDek panels are available with optional L.O.E. enhancement modifications that help drain rainwater away from the panel during the facility construction for a limited amount of time.

UL Classified Fire Rated Assembly for 1 to 2 Hours



ResinDek® flooring system is UL Classified for up to a 2 hour fire rated assembly under UL Design No. L701 and UL File No. R39265.

For more information about UL, ESR, L.O.E., or our other certificates including LEED and FSC please contact Cornerstone Specialty Wood Products, LLC®

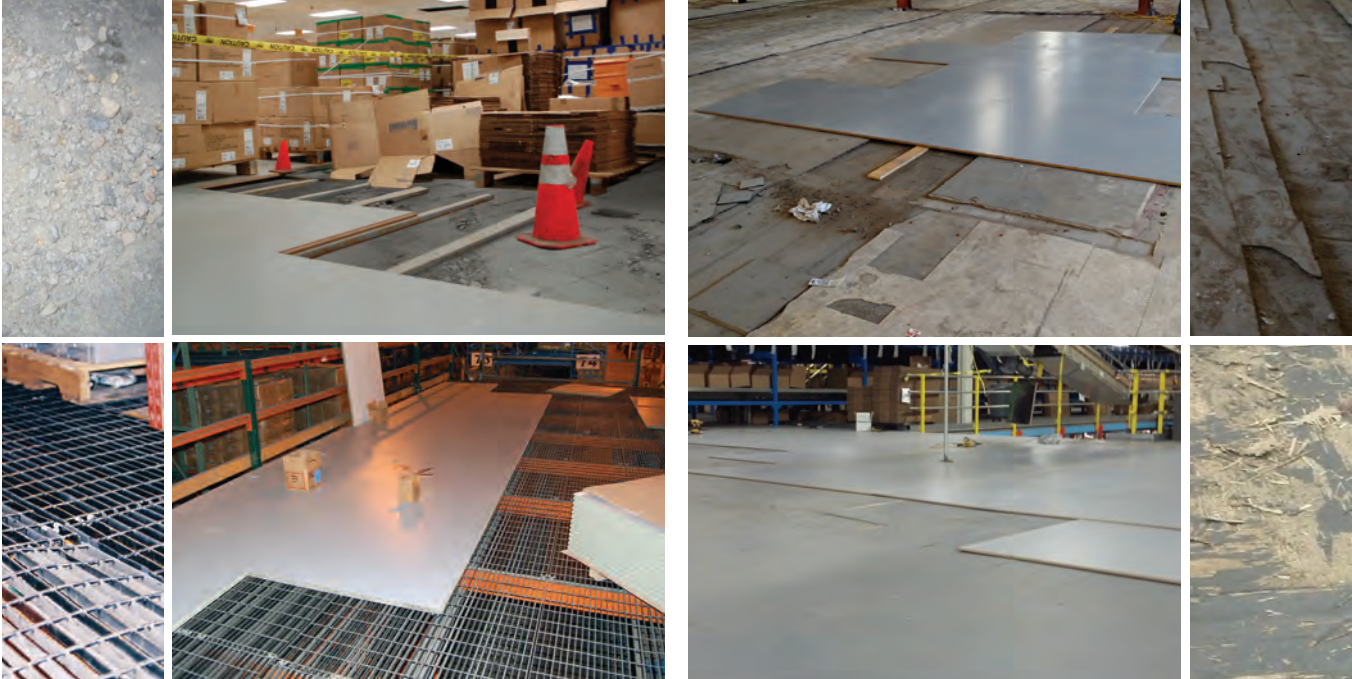
Evaluation Service Report for Fire-Resistance



ResinDek flooring panels have been independently evaluated and approved for use in Types I-V construction as part of a fire-resistance rated assembly by the IAPMO Uniform Evaluation Services. ESR Number 467.

ResinDek® Panels - The Rework Solution for Self-Storage Conversion Projects

If you are converting an existing facility ResinDek panels are the optimal choice. ResinDek panels can be installed over cracked concrete, floors that are delaminating, plywood that is splintering and even over damaged bar grate.



Corrugated Metal Decking: B DECK

Cornerstone Specialty Wood Products, LLC® provides corrugated metal deck products in a variety of profiles, thicknesses, yield strengths and finishes. We will help you optimize sizes, runs, steel thicknesses, corrugated profiles, and beam spacings.

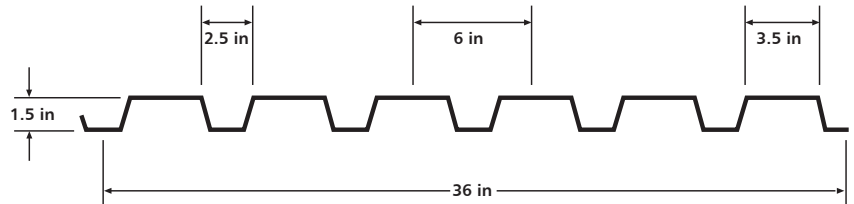
B Deck 1.5" Allowable Uniform Loads (PSF) / Loads That Produce L/240 Deflection

Number of Spans	Gauge	Min Yield (KSI)	36"	42"	48"	54"	60"	66"	72"	78"	84"	90"
Single	20	60	565 / 462	415 / 291	318 / 195	251 / 137	203 / 100	168 / 75	141 / 58	120 / 45	104 / 36	90 / 30
	18	60	792 / 658	582 / 414	445 / 278	352 / 195	285 / 142	236 / 107	198 / 82	169 / 65	145 / 52	127 / 42
	16	33	575*	422*	323*	255*	207 / 186	171 / 140	144 / 108	122 / 85	106 / 68	92 / 55
Double	20	60	563*	418*	322*	256*	208*	172*	145*	124 / 116	107 / 93	93 / 75
	18	60	788*	586*	452*	359*	292*	242*	204 / 202	174 / 159	150 / 127	131 / 103
	16	33	552*	410*	317*	252*	205*	170*	143*	122*	105*	92*
Triple	20	60	692*	516*	399 / 388	317 / 273	258 / 199	214 / 149	180 / 115	154 / 91	133 / 72	116 / 59
	18	60	966*	722*	558 / 534	445 / 375	362 / 273	300 / 205	253 / 158	216 / 124	187 / 100	163 / 81
	16	33	676*	505*	391*	311*	254*	210*	177*	152*	131 / 128	114 / 104

NOTE: * Allowable Uniform Load shown only, L/240 Exceeds Allowable Load

B Deck Physical Properties

Gauge	Thickness (in)	Weight (lb/ft ²)	
		Painted	Galvanized
20	.0358	2.1	2.2
18	.0474	2.8	2.9
16	.0598	3.4	3.5



Corrugated Metal Decking: N Deck

We recommend that a minimum of 20 gauge metal deck be used on all 3/4" ResinDek® flooring projects and a minimum of 18 gauge when live and dead pallet jack loads exceed 2,500 lbs.

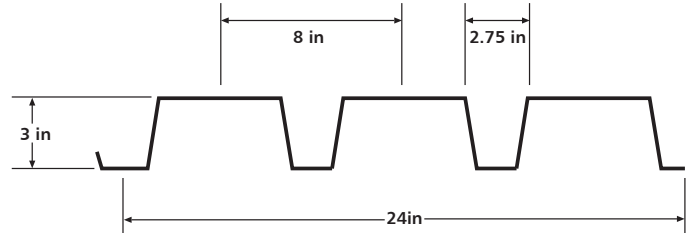
N Deck 3" Allowable Uniform Loads (PSF) / Loads That Produce L/240 Deflection

Number of Spans	Gauge	Min Yield (KSI)	84"	90"	96"	102"	108"	116"	120"	126"	132"	138"
Single	20	60	219 / 160	191 / 130	168 / 107	149 / 89	133 / 75	119 / 64	108 / 55	98 / 47	89 / 41	81 / 36
	18	60	325 / 236	283 / 192	249 / 158	220 / 132	196 / 111	176 / 94	159 / 81	144 / 70	132 / 61	120 / 53
	16	40	290*	253*	222*	197 / 186	175 / 157	157 / 133	142 / 114	129 / 99	117 / 86	107 / 75
Double	20	60	224*	209*	189*	168*	150*	135*	122*	111*	101*	92*
	18	60	349*	304*	268*	238*	213*	191*	173*	157*	143*	131*
	16	40	305*	266*	234*	208*	186*	167*	151*	137*	125*	114*
Triple	20	60	255*	238*	223*	208 / 192	186 / 161	167 / 137	151 / 118	137 / 102	125 / 88	115 / 77
	18	60	430*	378*	333 / 323	295 / 269	264 / 227	237 / 193	215 / 165	195 / 143	178 / 124	163 / 109
	16	40	378*	330*	291*	258*	231*	207*	187*	170*	155*	142*

NOTE: * Allowable Uniform Load shown only, L/240 Exceeds Allowable Load

N Deck Physical Properties

Gauge	Thickness (in)	Weight (lb/ft ²)	
		Painted	Galvanized
20	.0358	2.5	2.5
18	.0474	3.2	3.3
16	.0598	4.1	4.2



Installation is Fast and Easy with the ResinDek® Fastening Systems

Stand-Up Screwdriver & Top Side Drill Screws

For conventional top side screw installation, use Cornerstone Specialty Wood Products, LLC® collated stand-up screwdriver and collated drill screws. Not only will the collated screwdriver save you up to 40% in fastening costs, but it will reduce installation fatigue with its ergonomic design. The screws are engineered for strength, durability and easy installation. No countersinking or pre-drilling is required as the wings near the top of the shaft create a counterbore for the screwheads. The number 2 square drive head in conjunction with the drill point easily pierce up to 12 gauge steel decking. The screws are designed to drill through the ResinDek panels and steel decking prior to the threads engaging, thus preventing the panels from lifting.

Invisi-Loc® Underside Fastening System

Invisi-Loc provides showcase mezzanine floors with no visible fasteners that are dependable, economical and easy to install. The Invisi-Loc fastening system mounts fasteners under the mezzanine decking hiding unwanted screw holes on top. Plus, when installed with our pre-punched corrugated metal decking, installation time is reduced and potentially dangerous metal shavings are eliminated.



Invisi-Loc Fastening System





ResinDek®
Provides a Showcase
Appearance
Year After Year!

ResinDek® Performance Advantage - Always Innovating and Always Testing



Cornerstone Specialty Wood Products' team never stops evaluating and testing new approaches for mezzanine floors. We believe in helping our customers solve problems through innovative designs and long-lasting durability. At our advanced research and engineering facility we have designed and built a series of floor testing equipment that accurately replicate field conditions. In addition to testing internally we also send our products out to be evaluated by independent laboratories for a wide variety of tests.

Here's an example of just some of the testing:

- Structural Testing
- ResinDek Physical Property Testing
- Moisture Resistance Testing
- Fire Testing
- Coating Testing
- Metallurgical Testing on Steel
Corrugated Decking
- Fastener Testing
- Ergonomic / Tibial Shock
- ESD (Electrostatic Dissipative) Testing
- Coating Wear Testing (Taber Abrasion)
- 3D Analysis of Wheel Load Pressures

With constant testing and new product development we have been able to solve both existing problems and address the challenges of new technologies and applications for our customers. If you have a custom loading condition that we can recreate, we will work with you to develop a custom test. If a custom test application can be successfully completed to meet the rigors of our requirements, we will stand behind your unique application with our unmatched 10-year product warranty.



Value Added Services

Since 1994, ResinDek flooring panels have been installed in distribution centers, warehouses, manufacturing plants, self-storage facilities, and cold storage facilities for major corporations worldwide. Cornerstone Specialty Wood Products' is held to the highest standards with an emphasis on innovation, engineering, quality, and overall service. ResinDek is more than flooring, it is the value engineered solution and value added services all rolled into one. Whether your project is large or small, new or retrofit, custom or standard – you can absolutely depend on Cornerstone Specialty Wood Products steadfast commitment to customer service excellence and the ResinDek performance advantage.

At Cornerstone Specialty Wood Products our goal is 100% complete satisfaction for the customer and end user. Here's just a few of our value added services:

- Our engineering department can provide detailed CAD drawings that optimize materials and panel types to save time and money.
- Our sales department can help with pre-job planning and on-site consultation.
- Our in-house logistics department will coordinate the delivery of the ResinDek products to the jobsite and will make sure your products are delivered on-time and to the right location.
- Our installation support team is available to train inexperienced installers and answer any questions you might have.



Shown with ResinDek® & ResinDek® with MetaGard®

Tarrytown Self-Storage Builds Two Floors Simultaneously by Using ResinDek® Panels Instead of Concrete

Peter Ferraro, owner and developer of Tarrytown Self-Storage used ResinDek for the first time on an existing building he converted into a self-storage facility. The two story building had a footprint of 17,000 sqft. To maximize the rent-able space, he raised the roof 8' to allow for the addition of the 3rd floor.

Mr. Ferraro stated, *“When I saw ResinDek I immediately realized the advantages of it. ResinDek panels provided a substantial savings in dead weight compared to concrete and can easily handle the load requirement of 125 psf. Had I gone with concrete on the 3rd floor I would have needed additional pilings and more steel in the support structure.*

However, for us an even bigger advantage is that ResinDek panels allowed us to build faster than we could have with concrete. We were able to build the 2nd floor and 3rd floor simultaneously, because we didn't have to wait for the concrete to cure. This allowed all of the trades to work on multiple floors at the same time, the electrician and the plumber could keep working, so everything flowed smoothly.

As an added benefit the finish of the ResinDek panel has a nice color that reflects light well. Concrete has a tendency to crack. I definitely see the savings of time and money with ResinDek compared to concrete”.



All Canadian Self-Storage Installed ResinDek® Panels Over Existing Storage Units Without Evacuating the Occupied Units Below

ResinDek can be easily installed over existing storage units without the need to evacuate the occupied storage units below while the next level is being installed. Hal Spradling, owner of All Canadian Self-Storage did just this and was extremely satisfied. Read what Hal had to say:

“I was first introduced to ResinDek panels by an Ontario company who had been using ResinDek since 2004. Because of the price, delivery, installation, pre-finished surface, durability, structural integrity and great finished floor appearance, I decided to try it.

*We first installed ResinDek panels on our second level of storage units at our Weston location about three years ago. **Not only was it less expensive than concrete, it was considerably less disruptive to our existing business. The ResinDek panels went in quickly, and could be installed directly over existing storage units without the need to evacuate the occupied units while the second level was being installed.** After three years, the floor still looks great. We will be using ResinDek panels instead of concrete on all future construction, including a very large new multi-level, 220,000 sqft. facility later this year. For All Canadian Self-Storage, this investment makes a lot sense”.*



“After 3 years in service, ResinDek panels still look great at All Canadian Self-Storage”, said owner Hal Spradling.

Storage Fox Self-Storage *Saved Money* Using ResinDek® Panels Instead of Concrete!

Storage Fox is no newcomer to the Self-Storage Industry. Their current facility in White Plains, NY is their fourth project undertaken in the last six years. Each project has its own unique challenges. The current project is a ground + 2 level structure, consisting of approximately 20,000 sqft per level.

Local code officials originally told Storage Fox that a ground plus two level structure exceeded the F.A.R. (Floor Area to Footprint Ratio) requirements for the site. As such, the initial recommendation was for a ground plus one story structure. However, 3D Metalcraft, owned by Rick Dodge, helped Storage Fox come up with a home run for their facility – A mezzanine constructed on the third level with materials that allowed the third level to be designated as a temporary demountable structure. Using ResinDek + 18 Gauge N Deck, they were able to construct the top floor directly over the interior load bearing walls without the need for extra steel joists.



Storage Fox saved \$100,000

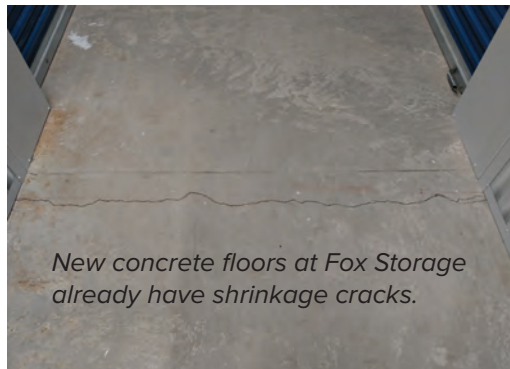
“ResinDek panels were the absolute perfect solution for this site. First, we got to increase our storage space by an extra 50%. Second, we saved \$5 per square foot in the construction process. That amounts to \$100,000 on this project, and that’s Real Money where I come from. Even better, we saved a significant amount of installation time in the process! We have a large project coming up in the next 18 months. If we can use ResinDek panels on all elevated floors, we can generate a savings of up to \$500,000 on that project. Savings of that magnitude are huge, and will create enough capital to help us start our next project even sooner!” Tommy Attonito, Owner of Storage Fox.

Storage Fox Self-Storage *Saved Time* Using ResinDek® Instead of Concrete!

Since ResinDek® panels are a finished product, 3D Metalcraft could begin installing the interior partitions just as soon as the panels were fixed in place. With concrete, there is a lot more time and a bigger mess. In addition to working with a wet product, there is a lot of labor associated with screeding, floating, and finishing the floor.

“With concrete floors, we generally have to stay off the floors for 5 to 7 days, and the concrete must cure for a minimum of two weeks before we can start using tapcon anchors to seat the floor track for partitions. Because we could start on interior partitions right away, we got the job done faster and cheaper, and we were able to pass the savings along to our customer”, said Dodge.

According to Storage Fox, there are longer term benefits as well. *“The ResinDek floor’s gloss finish is easy to clean. Our brand new concrete floors already have shrinkage cracks, don’t look as nice, and will be very dusty for a minimum of the next six months. Finishing concrete floors is expensive, and the paint tends to wear off. With Cornerstone’s exclusive 10 year warranty, we can focus our efforts on other things, knowing that our flooring issues are solved”,* said Attonito.



Pacific Mini Storage Avoids Expensive Real Estate by Building Up, Not Out



Central Self-Storage (formerly Pacific Mini Storage)

In 2003, Pacific Mini Storage wanted to expand their enclosed facility located just outside San Francisco, California. However, with the high cost of land, traditional horizontal expansion wasn't feasible. So Pacific Mini Storage hired Cubic Designs to "go vertical" with the design and install a mezzanine directly above the existing storage units. This doubled the facility's size and revenue, as an additional 54,000 square feet of storage space was added. ResinDek® panels, structural steel, and corrugated metal decking provided the ceiling for the first level and flooring for the second level.



ResinDek® MD panels installed in 2003

After 13-Years the ResinDek® Floors at Central Self-Storage Still Look Great

Since then, Pacific Mini Storage was acquired by Central Self Storage. In March of 2016, Cubic Designs went to visit the facility to make sure that the mezzanine was meeting all of Central Self Storage's needs. Christy, the manager at Central Self Storage, told Cubic Designs that she continues to be impressed with the mezzanine: *"as far as the comments on how the mezzanine has held up... fantastic! It was put together so well, everything seems so perfect. I have been here for almost seven years and I haven't found one thing that anyone could complain about"*.



ResinDek panels are less expensive than concrete and can be easily installed without evacuating the occupied units below. ResinDek floor panels shown in both these pictures are 13 years old!





ResinDek® 10-Year Product Warranty, The Only Warranty That Covers Pallet Jack Loads for 10 Years!

Cornerstone Specialty Wood Products, LLC® warrants all ResinDek panels to be structurally sound, able to safely carry the specified design loads, and free from defect. For complete details on the ResinDek 10-year product warranty please visit www.resindek.com or call 888.755.3048.



LEED®, No Added Formaldehyde, and FSC®

All ResinDek panels are certified to have No Added Formaldehyde. ResinDek mezzanine flooring panels can contribute towards LEED v4 Credit IEQ 4.4, as well as MR 4, and potentially MR 5, depending on the project's location. When required ResinDek panels are available with FSC® Certification. FSC® License Code FSC-C124474.



CORNERSTONE

SPECIALTY WOOD PRODUCTS, LLC®

12020 Tramway Drive

Cincinnati, OH 45241

Toll Free: 888.755.3048 | Tel: 513.772.5560

Email: info@resindek.com

www.resindek.com

© Mar 2019 Cornerstone Specialty Wood Products, LLC® All rights reserved. Cornerstone Specialty Wood Products, LLC, the Cornerstone logo, the 10-year warranty logo, ResinDek, The Panel of Experts, Xspan, TriGard, MetaGard, Diamond Seal 2 and Invisi-Loc are trademarks of Cornerstone Specialty Wood Products, LLC®. ResinDek with MetaGard Patent Pending.

In our continuing effort to improve our products, some specifications or descriptions may change. We reserve the right to make such changes without notice or recourse.