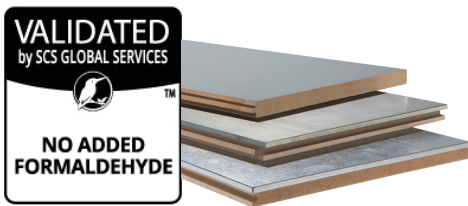


**PANEL CONSTRUCTION**

**ResinDek®**

ResinDek engineered flooring panels are custom manufactured with specially sorted and processed wood fibers, customized formaldehyde free resins, and a wax emulsifier for moisture resistance. The ingredients are combined and compressed under extremely high pressure and temperature, resulting in a panel with superior physical properties. All ResinDek panels are certified by SCS Global Services to have No Added Formaldehyde.



**Plywood**

Plywood is made from peeler logs. Thin layers are peeled from wood logs by rotating them along their horizontal axis. The sheets of veneer obtained from this process are cut to the desired dimensions, dried, patched, glued together, and then baked to form a plywood panel. Depending on the grade of plywood, it may or may not be smooth. Plywood uses urea-formaldehyde and phenol-formaldehyde resin which are carcinogenic in very high concentration.



**DYNAMIC AND STATIC WHEEL LOADS**

**ResinDek®**

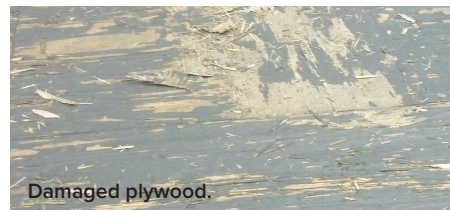
ResinDek flooring panels have the proven structural integrity to support dynamic and static pallet jack load limits from 2,000 – 8,000 lbs and the rigorous demands of AGVs and AMRs.

ResinDek comes standard with a 10-year product warranty. It is the only warranty in the industry to cover pallet jack loads for 10 years!



**Plywood**

Wheel loads are lower for plywood and will often splinter and delaminate, making it difficult for pallet jacks to roll across. American Plywood Association recommends no more than 200 lbs listed per wheel (total 570 lbs on a pallet truck) for repeat traffic with corrugated metal decking below, 400 lbs per wheel (total 1140 lbs on a pallet truck) for intermittent use. In addition, there is possible fiber separation of plywood due to wheel loads.



**CLEANABILITY**

**ResinDek®**

ResinDek panels with our industrial coatings can be easily cleaned using a damp mop or standard cleaning solvents without fear of damaging the surface.

**Plywood**

Plywood shows stains and is difficult to clean.